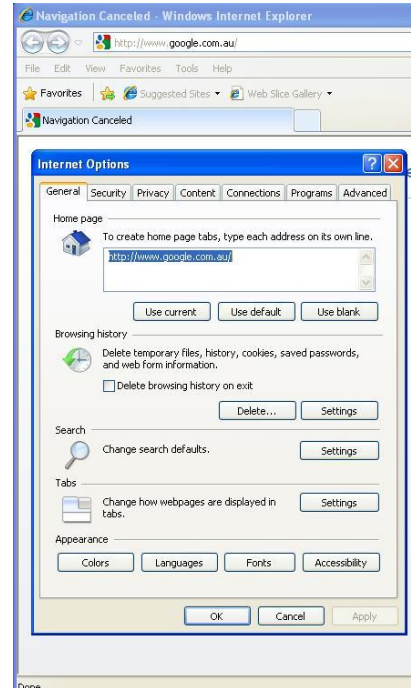


Internet Explorer – Security Settings

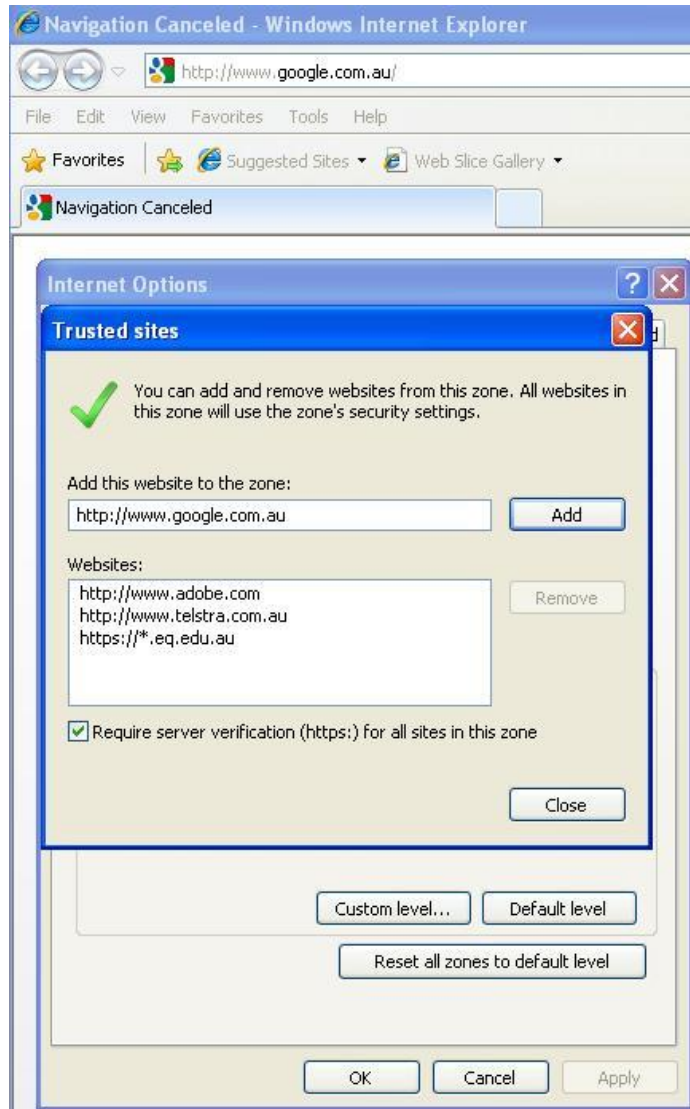
1. Open internet explorer - click tools – internet options which will bring this box up.



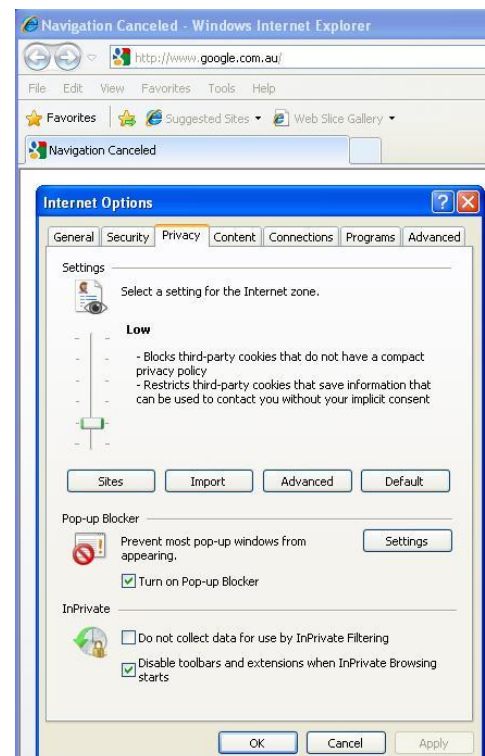
2. Click the Tab *Security* and then click the *Trusted Site*.



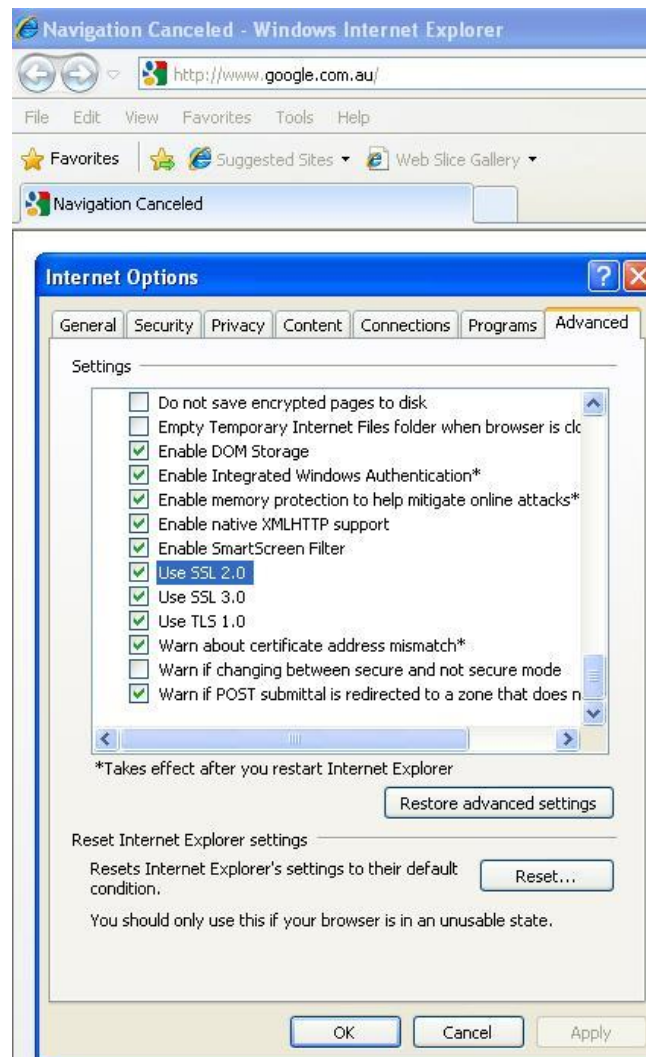
3. Type https://*.eq.edu.au
Click *Add* (this adds all secure sites under the eq.edu.au domain) then close.



4. While you have the *Internet Options* box open, check the settings on your security are set to Medium.



5. Also check that the advanced settings have got the SSL settings as attached.



6. Click *OK* when finished.